

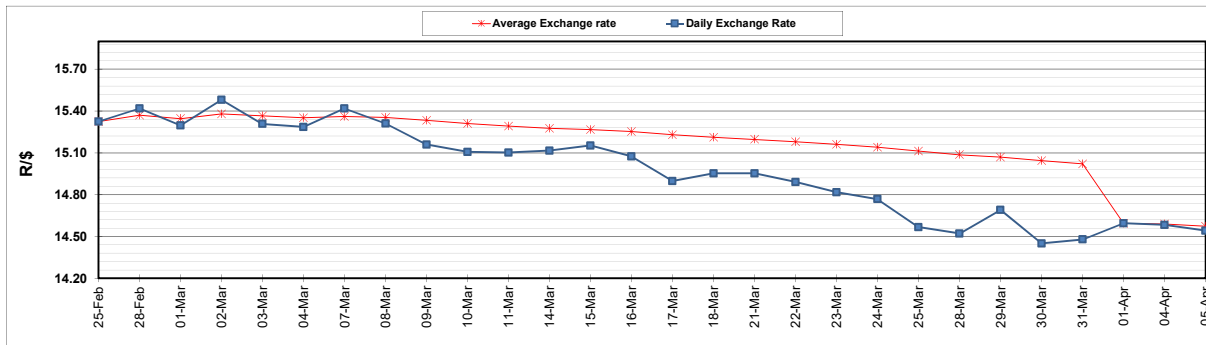
	PETROL 95 ULP	PETROL 93 ULP & LRP	DIESEL 0.05%	DIESEL 0.005%	ILL. PAR.
GAUTENG PUMP PRICE (SA c/l) AS FROM 06/04/2022	2,196.000	2,163.000	-	-	-
WHOLESALE PRICE (SA c/l) AS FROM 06/04/2022	-	-	2,101.440	2,123.840	1,584.688
SINGLE NATIONAL MAXIMUM RETAIL PRICE	-	-	-	-	2,045.000
BASIC FUEL PRICE - 05/04/2022 (SA c/l)	1,200.288	1,182.794	1,397.931	1,411.509	1,369.149
PRESS RELEASE CONTRIBUTION TO BFP 01/04/2022 - 05/04/2022 (SA c/l)	1,100.270	1,085.270	1,107.630	1,114.030	1,097.128
UNIT OVER/(UNDER) RECOVERY - 05/04/2022 (SA c/l)	(100.018)	(97.524)	(290.301)	(297.479)	(272.021)
AVERAGE BASIC FUEL PRICE 01/04/2022 - 05/04/2022	1,194.366	1,173.022	1,398.871	1,414.446	1,374.317
AVERAGE UNIT OVER/(UNDER) RECOVERY 01/04/2022 - 05/04/2022	(94.096)	(87.752)	(291.241)	(300.416)	(277.189)

ANALYSIS MOVEMENT OF AVERAGE OVER/(UNDER) RECOVERY

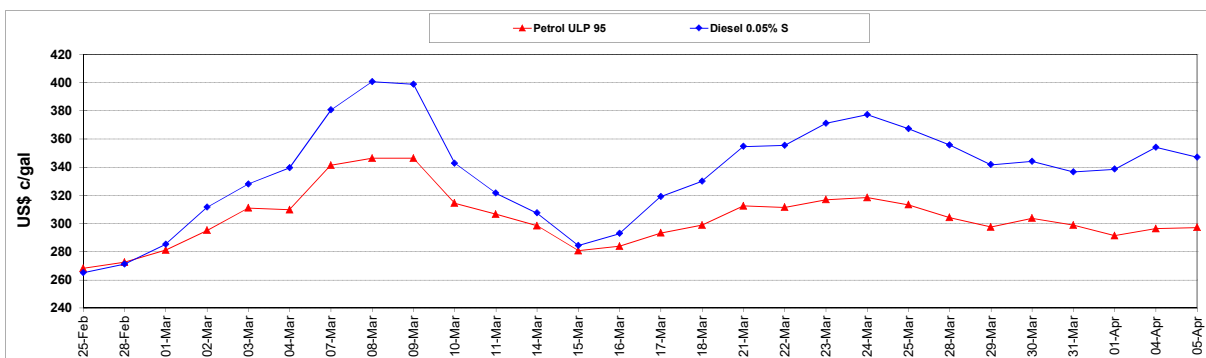
	PETROL 95	PETROL 93	DIESEL 0.05%	DIESEL 0.005%	ILL. PAR.
- MOVEMENT IN INTERNATIONAL PRODUCT PRICES	(130.841)	(123.840)	(334.278)	(343.931)	(319.470)
- MOVEMENT IN EXCHANGE RATE	36.745	36.088	43.036	43.516	42.281
AVERAGE UNIT OVER/(UNDER) RECOVERY 01/04/2022 - 05/04/2022	(94.096)	(87.752)	(291.241)	(300.416)	(277.189)

R/\$ EXCHANGE RATE - (R/\$14.5408 - 05/04/2022)

EXCHANGE RATE USED IN BASIC FUEL PRICE



INTERNATIONAL PRODUCT PRICES OF BASKET USED IN BASIC FUEL PRICE



BASIC FUEL PRICE IN SA CENTS PER LITRE

